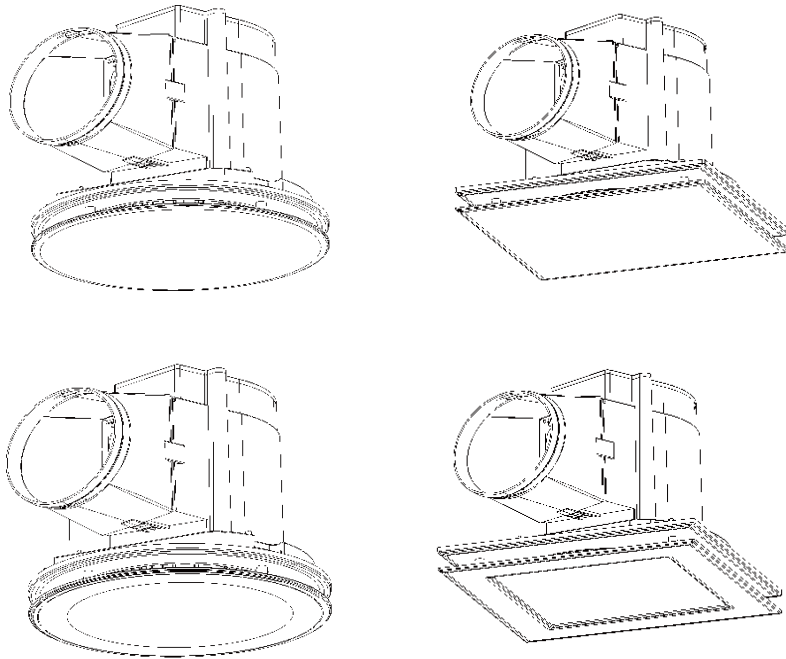


INSTALLATION GUIDE

FLOW 300



Product Code:

MXFFR30W	Flow Round 300mm Exhaust Fan White
MXFFS30W	Flow Square 300mm Exhaust Fan White
MXFLFR30W	Flow Round 300mm Exhaust Fan & 12W Tricolour LED Light White
MXFLFS30W	Flow Square 300mm Exhaust Fan & 12W Tricolour LED Light White

CAUTION
READ INSTRUCTIONS
CAREFULLY FOR SAFE
INSTALLATION AND FAN
OPERATION



**MUST BE
INSTALLED BY
A LICENSED
ELECTRICIAN**

SAFETY PRECAUTIONS

Thank you for selecting Martec ceiling mounted exhaust fan or fan and light. Please read all instructions before commencing installation.

IMPORTANT: This unit must be installed to comply with the appropriate council regulations and the Australia and New Zealand wiring rules AS/NZS3000:2000 or latest edition thereof.

This unit is fitted with a plug (exhaust fan model only), however any interconnecting wiring and switches used or use of another plug must be fitted by a licenced electrician. The plug supplied must be connected to the socket that is above the ceiling or in roof cavity, any other use is not permitted.

The main supply, switches and interconnecting cables required for installation of this unit are not included.

WARNING

- Use this unit only as described in this manual. Any other use not recommended by the manufacturer may cause fire, electric shock or injury to persons. If you have any question, contact the manufacturer or local agent
- All wiring must be carried out by a licenced electrician in accordance with all applicable National/local codes and standards. Also check with the local council regulations regarding installation of exhaust fans
- Make sure the power is off before installation
- When cutting into the ceiling, do not damage electrical wiring and other hidden utilities
- The unit must be properly earthed
- For the purpose of avoiding any dangerous gas leaking into your bathroom, the ventiduct of the unit must not be laid together with the ventiduct of air-fueled water heater or other open fire appliances into the same flue
- The unit must be isolated from the power by means of a plug or all-pole disconnection switch with a contact separation of at least 3mm in each pole
- The power cable must withstand a minimum 10A load
- The unit is not intended for use by young children or infirm persons unless they have been adequately supervised by a responsible person to ensure that they can use the unit safely
- Young children should be supervised to ensure that they do not play with the unit

IMPORTANT CONSIDERATIONS BEFORE INSTALLING

A few minutes planning can make a big difference to the installation time and also to your satisfaction with the function of the unit.

- Generally the unit should be mounted outside the shower cubicle
- For the exhaust fan to work efficiently, replacement air of a volume equivalent to what is being extracted must be able to enter the room. In general this air would be drawn under the door, or through a slightly open window. If the room is airtight, the fan will function poorly
- This unit is designed for installation in flat ceiling only. Do not mount it on a sloping ceiling or a vertical wall
- Before commencing any cutting, check in the ceiling space that there are no obstructions such as ceiling joists and that there is sufficient height clearance for the housing. Check that the electrical wiring can be routed from the wall switch to the mounting location

PLEASE NOTE: Check for any damage to the unit prior to installation.

Physical damage such as marks and scratches are not covered by the in-home warranty.
In this case, please contact the Martec support team to discuss replacement parts.

INSTALLATION

Step 1. Cutting a vent (when required)

For installation where external venting is required or is your choice, locate a suitable location in either the roof or exterior wall to vent out the exhausted air/steam and cut out a 155mm diameter hole.

Step 2. Ducting

Put one end of a 150mm diameter ventiduct (not supplied) into the vent hole and seal space around the hole using a suitable sealant and cawling where necessary. (Figure 1)

Step 3. Locating the unit

For the fan to work efficiently, from the grill there should be about a 2.3m overall height to the ground.

Step 4. Prepare the ceiling

Use this card as a template, mark the ceiling with a pencil outline and cut out a hole in the ceiling at the chosen area. Make sure a distance between the edges and wall is no less than 250mm.

Also from the rooftop there should be a minimum 250mm height to the ceiling. (Figure 2) Ensure that the intended hole will have suitable room to the unit and will not foul on joists or not fit in the headroom provided.

Step 5. Remove the fascia

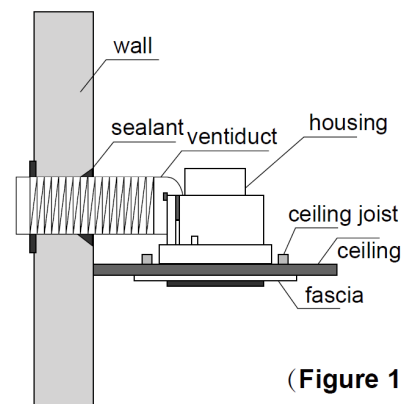
Pull the fascia a little, press the fascia retaining springs backside and remove the fascia. Remove the plug of the LED first if the unit is an exhaust fan and light model.

Step 6. Wiring (Ensure the power is turned off)

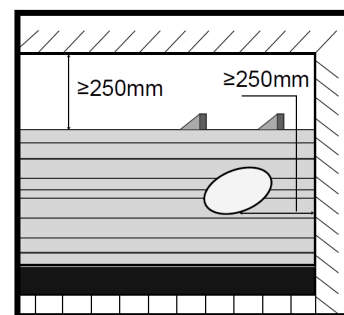
Please comply with the local wiring rule when wiring.

Wire the unit as per the wiring diagram.

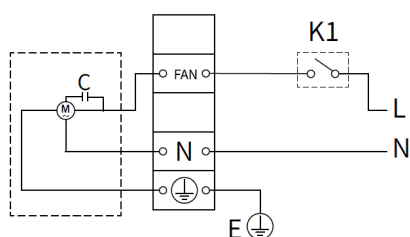
For exhaust fan model, please refer to figure 3. For exhaust fan and light model, please refer to figure 4.



(Figure 1)

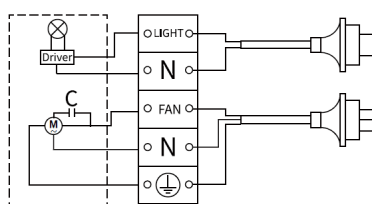


(Figure 2)



M:Motor C:Capacitor
K:all-pole disconnection switch

(Figure 3)



M:Motor C:Capacitor
K:all-pole disconnection switch

(Figure 4)

INSTALLATION

Step 7. Position the housing into the hole

Choose an optimal direction to put the housing into the hole in accordance with the position of fan outlet. Fit the fan outlet to the in-house end of the ventiduct, then put the body of the unit into the hole in the ceiling.

Note: Try to keep the redundant wire away from the housing

Note: The shortest, smooth surface ventiduct with the least elbows will provide optimum fan performance. Please keep the ventiduct as straight as possible. (Figure 5)

Note: Ensure the 3 slips are drawn back so the unit can be easily pushed into the hole in the ceiling

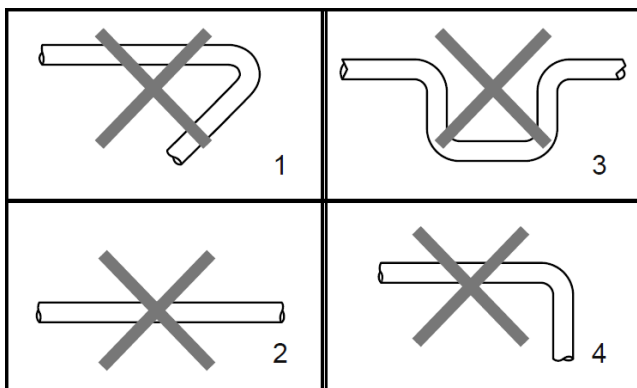
Note: It is highly recommended that interconnected wire be laid into the wall beforehand for the purpose of keeping an integrated look in the bathroom

Step 8. Fasten the unit on the ceiling

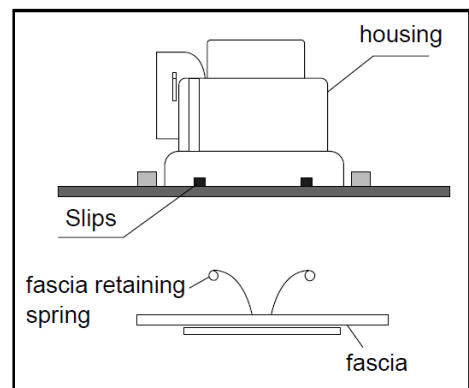
Push the 3 slips outwards and then tighten the screws until the clips can clamp the ceiling tightly. (Figure 6)

Step 9. Replace the fascia

Connect the LED plug if the unit is an exhaust fan and light model. Put the two fascia retaining springs on the fascia into the two slots in the unit and make sure the fascia is well fixed.



(Figure 5)



(Figure 6)

IMPORTANT NOTICES

USE

Running the fan can exhaust odours and steam in a quick and efficient way.

Note: Shut off power urgently when any abnormalities occur in operation. Then call your local licenced electrician for inspection or necessary service work.

Note: It is absolutely prohibited to insert finger or thin bar to the fascia for avoiding being injured or damaging the unit.

MAINTENANCE

1. Shut off power before cleaning or maintenance
2. Wipe fascia with care using a soft cloth soaked with water or neutral detergent. Ensure the motor or other electrical parts can not touch the water
3. Replace the fascia after it is dry thoroughly

The installation must be conducted by a licenced electrician and a suitable certificate of safety is to be issued by the electrician who installed the unit. Warranty claims will be voided unless a certificate of safety can be produced when required, prior to service or repair.

This warranty does not cover damages or loss caused by:

1. Light lamp or failure of light lamp
2. Any consequential losses arising from incorrect installation or operation or maintenance of this product
3. Any consequential losses arising from incorrect wiring of this product
4. Any modifications or changes made to the unit, other than those recommended by the manufacturer

ACCC Required Statement

Our goods come with guarantees that cannot be excluded under the Australian Consumer Law. You are entitled to Martec replacing the product in home with parts and labour for a major failure. You are also entitled to have the goods repaired or replaced if the goods fail to be of acceptable quality and the failure does not amount to a major failure. Martec offers an in home warranty that includes parts and labour so the end consumer is not out of pocket.

WARRANTY INFORMATION

2 Year Replacement Warranty

For further information please visit our website (link below) OR scan the QR code.
<https://www.martec.com.au/warranty-statement>



For technical support, please contact Martec customer service hotline at **(02) 8778 7500**.

Customer Service operates between 8AM to 4PM EST Monday to Friday.