

Conrad LED Ceiling Light Installation Guide

We strongly recommend that you read this manual carefully before installation.
Installation MUST be carried out by a qualified and licensed electrician.

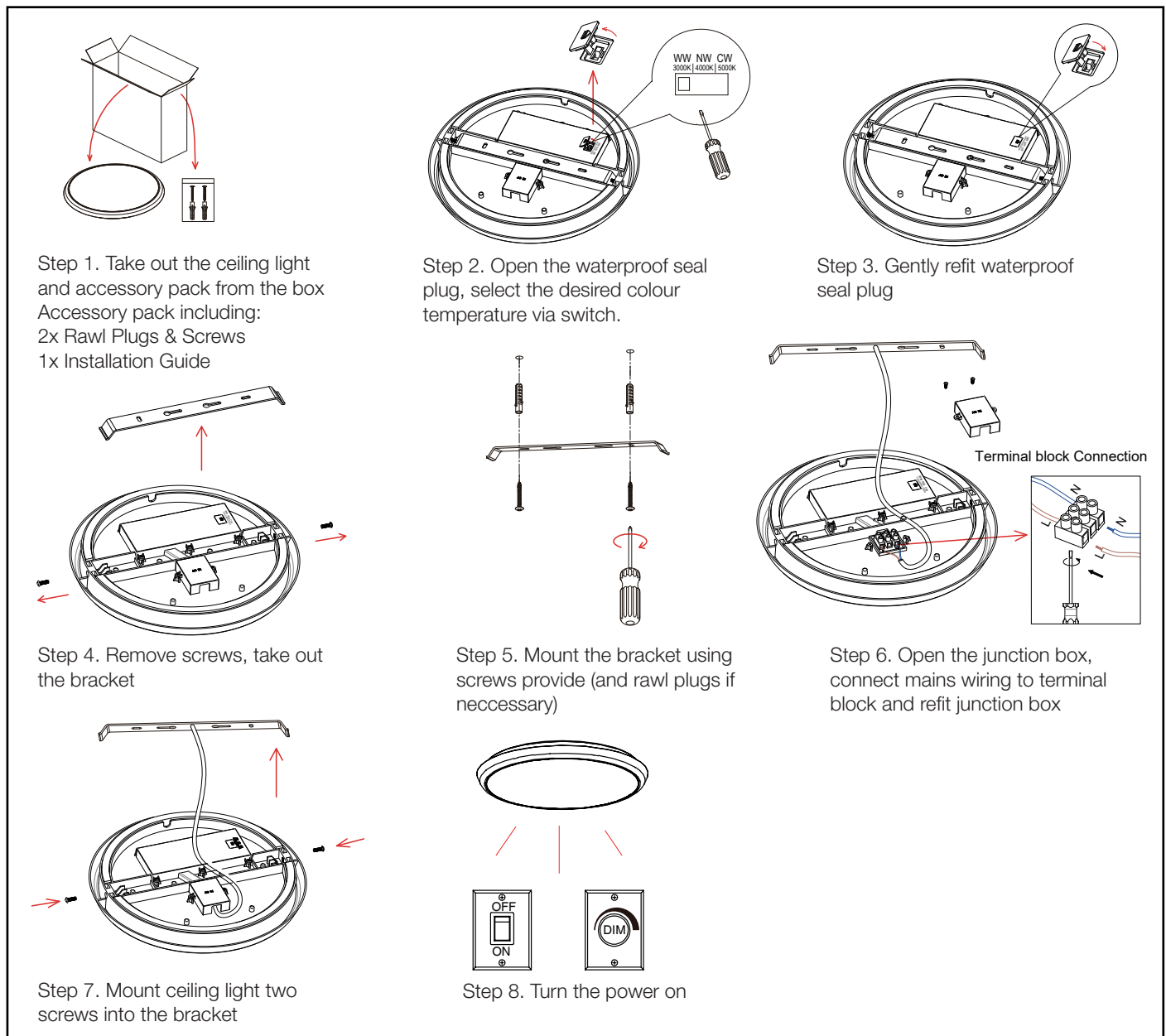


Replacement
Warranty

Models Parameters:

MLCO34515MD	Martec Conrad 200mm LED Oyster Light 15w Tricolour Matt Black
MLCO34515WD	Martec Conrad 200mm LED Oyster Light 15w Tricolour Matt White
MLCO34524MD	Martec Conrad 300mm LED Oyster Light 24w Tricolour Matt Black
MLCO34524WD	Martec Conrad 300mm LED Oyster Light 24w Tricolour Matt White
MLCO34535MD	Martec Conrad 400mm LED Oyster Light 35w Tricolour Matt Black
MLCO34535WD	Martec Conrad 400mm LED Oyster Light 35w Tricolour Matt White

Installation Instructions



Conrad LED Ceiling Light Installation Guide

Technical specifications

Model	Power	Colour Temperature	Lumens Output	Voltage	IP	CRI
MLCO34515	15W	3000K/ 4000K / 5000K	1300lm / 1500lm / 1400lm	220-240V 50Hz	IP54	80
MLCO34524	24W	3000K/ 4000K / 5000K	2100lm / 2300lm / 2200lm	220-240V 50Hz	IP54	80
MLCO34535	35W	3000K/ 4000K / 5000K	3100lm / 3300lm / 3200lm	220-240V 50Hz	IP54	80

WARNING

- Installation of product **MUST** follow SAA standards and meet local authority regulations
- Installation **MUST** be carried out by a qualified and licensed electrician
- Light **MUST** be earthed
- Light **MUST** be firmly installed to a flat solid surface, wall or ceiling
- **DO NOT** immerse any part of the light fitting into water or any form of liquid
- **DO NOT** look directly into the LED light
- The warranty is **VOID** if product is not installed according to this installation guide

2 Year Replacement Warranty

Visit our website for details <https://www.martec.com.au/warranty-statement/>