

Capri LED Wall Light Installation Guide

We strongly recommend that you read this manual carefully before installation.
Installation MUST be carried out by a qualified and licensed electrician.



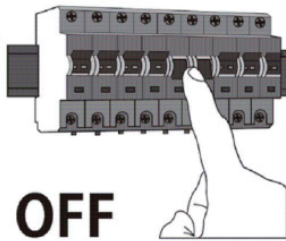
Replacement
Warranty

Models Parameters

MLXC3452WS LED Double Spot 2 x 9W Tricolour IP65 with PIR Sensor Exterior Matt White
MLXC3452MS LED Double Spot 2 x 9W Tricolour IP65 with PIR Sensor Exterior Matt Black

Installation Instructions

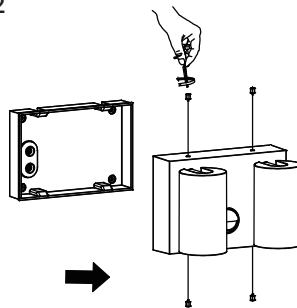
Step 1



OFF

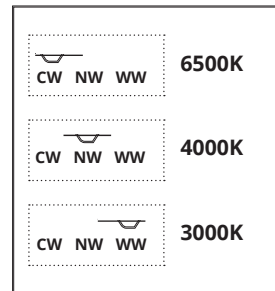
Switch off the mains.

Step 2



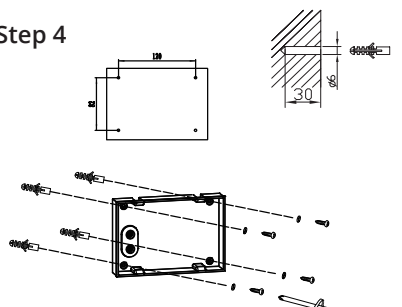
Unscrew and remove the mounting bracket using the allen key supplied.

Step 3



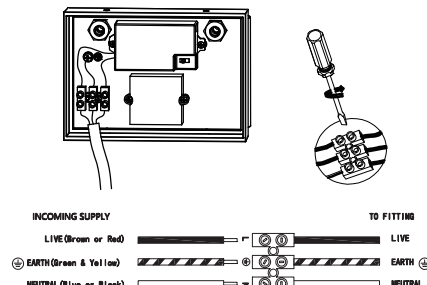
Choose colour temperature by flicking the switch.

Step 4



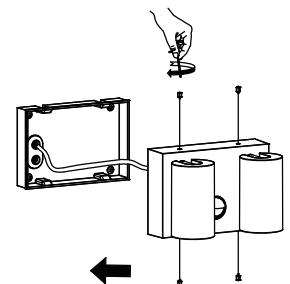
Mount the bracket on the desired surface using the four screws supplied.

Step 5



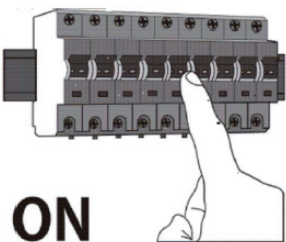
Wire to main as illustrated above.

Step 6



Attach fitting back onto the bracket using the allen key supplied.

Step 7

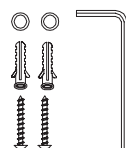


ON

Switch on the mains.

Accessories Included

1x allen key
4x washers
4x wall plugs
4x screws



Capri LED Wall Light Installation Guide

Data Table

Models	Power (W)	PF	CCT (K)	Weight (KG)	Operation Temperature (Degree)	IP
MLXC3452WS	2x9	>0.5	3000 4000 6500	1.05	+40° -20°	65
MLXC3452MS	2x9	>0.5	3000 4000 6500	1.05	+40° -20°	65

Sensor Settings

The sensing distance :

- 8m= maximum sensing distance is reached
- 1m= minimum sensing distance is reached

TIME:

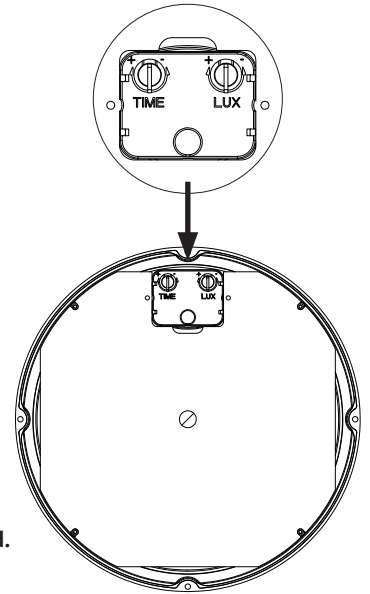
- TIME duration is adjustable from 10s (± 5) to 10min (± 2 min)
- Turn this knob towards “+” (10mins) to increase the delay
- time Turn this knob towards “-” (10s) to decrease the delay time

LUX:

LUX controls the ambient light of the load lamp. When the KNOB is set to:-

- “+” position = Daytime.
The sensor detects the movement of the human body and triggers the light at night and day.
- “-” position = Evening.
The sensor detects the movement of the human body at night and triggers the light of the load.

NB: The sensor does not work during the day. Ambient illumination: 3 - 2000lux
The lighting will turn on always when LUX set to Max.



WARNING

- Installation of product MUST follow SAA standards and meet local authority regulations.
- Installation MUST be carried out by a qualified and licensed electrician.
- Light MUST be earthed.
- Light MUST be firmly installed to a flat solid surface, wall or ceiling.
- DO NOT immerse any part of the light fitting into water or any form of liquid.
- DO NOT look directly into the LED light.
- The warranty is VOID if product is not installed according to this installation guide.

2 Year Replacement Warranty

Visit our website for details

https://www.martecaustralia.com.au/wp-content/uploads/2023/05/Warranty-Statement_Cooling.pdf

