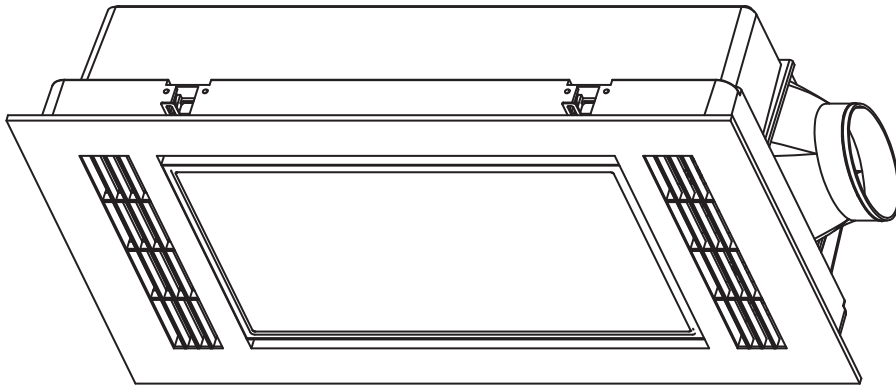


# INSTALLATION GUIDE

## FURNACE 4 in 1 Bathroom Heater



### Product Code:

MBHF2200W     Furnace 2200W Fan Forced Heat 4 in 1 Bathroom Heater Exhaust Fan with 18W  
Tricolour Light White

**CAUTION**  
READ INSTRUCTIONS  
CAREFULLY FOR SAFE  
INSTALLATION AND FAN  
OPERATION



**MUST BE  
INSTALLED BY  
A LICENSED  
ELECTRICIAN**

# SAFETY PRECAUTIONS

Dear customers,

Thank you for selecting Martec Bathroom Heater 3 in 1. Please read all instructions before commencing installation.

**IMPORTANT:** This unit must be installed to comply with the appropriate council regulation and the Australia and New Zealand wiring rules AS/NZS3000:2000 or latest edition thereof.

The main supply and interconnecting cables required for installation of this unit are not included.

## **WARNING - INSTALLATION ONLY TO BE CONDUCTED BY QUALIFIED ELECTRICIANS**

1. Use this heater only as described in this manual. The manufacturer does not recommend any other use as this may cause fire, electric shock or injury to persons. If you have questions contact the manufacture or local agent.
2. All wiring must be carried out by a licensed electrician in accordance with all applicable codes and standards.
3. Make sure the power is off before the installation.
4. When cutting into the wall, do not damage electrical wiring and other hidden utilities.
5. The heater must be properly grounded.
6. The lamps are hot when in use. Do not touch the infrared lamps with any part of your body when in use.
7. For the purpose of avoiding any dangerous gas leaking into your bathroom, the ventiduct of the heater, must not be laid together with the ventiduct of air-fueled water heater or other open-fire applications into the same flue.
8. The disconnection may be achieved by having the plug accessible or by incorporating a switch in the fixed wiring in accordance with the wiring rules. The heater must be isolated from the power by means of a plug or all-pole disconnection switch with a contact separation of at least 3mm in each pole.
9. The power cable must stand a minimum 5A load.
10. The appliance is not intended for use by persons (including children) with reduced physical, sensory or mental capabilities or lack of experience and knowledge, unless they have been given supervision or instruction concerning use of the appliance by a person responsible for their safety.
11. Children should be supervised to ensure that they do not play with the appliance.
12. The heater is to be installed so that the switches and other controls cannot be touched by a person in the bath or shower.
13. The appliance shall, under no circumstances, be covered with insulating material or similar material.
14. Regulations concerning the discharge of air have to be fulfilled.
15. Joists, beams and rafters shall not be cut or notched to install the appliance.

# BEFORE INSTALLATION

## IMPORTANT CONSIDERATIONS BEFORE INSTALLING

A few minutes of planning can make a big difference to the installation time and also to your satisfaction with the function of the unit.

1. The unit should not be installed directly above a shower or bathtub.
2. The unit must not be installed in a position where water may splash onto the lamps.
3. The unit must not be installed in a sauna steam room.
4. The unit must not be installed beneath a fixed socket.
5. The unit is designed for installation in flat ceilings only. Do not mount it on a sloping ceiling or a vertical wall.
6. For the exhaust fan to work efficiently, replacement air of a volume equivalent to what is being extracted must be able to enter the room. Generally, this air would be drawn under the door, or through a slightly open window. If the room is airtight, the fan will function properly.
7. Before commencing any cutting, check in the ceiling space that there are no obstructions such as ceiling joists and that there is sufficient height clearance for the housing. Check that the electrical wiring can be routed from the wall switches to the mounting location.
8. Ensure the ceiling is strong enough to support the weight of at least 20kg.

**PLEASE NOTE:** Check for any damage to the unit prior to installation.  
Physical damage such as marks and scratches are not covered by the in-home warranty.  
In this case, please contact the Martec support team to discuss replacement parts.

# INSTALLATION

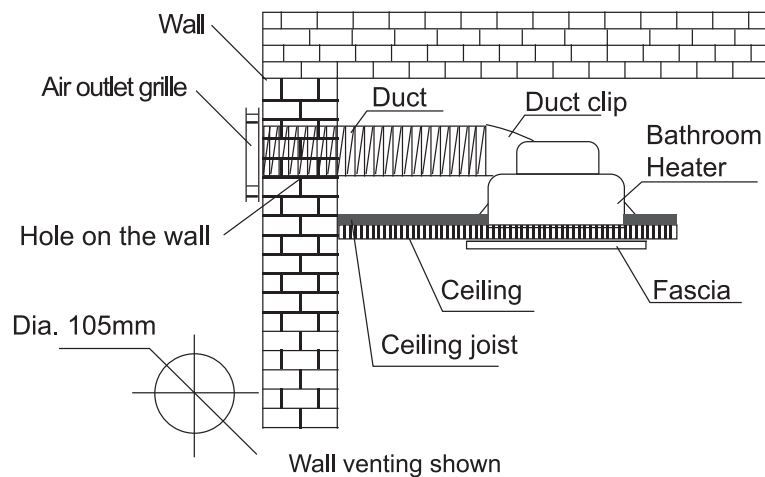
## Step 1: Cutting a vent

Locate a vent position (above the ceiling) on the wall, and then cut a 105mm diameter hole at this position.

## Step 2: Ducting and air outlet grille

Sleeving one end of the 100mm diameter vent-duct on the air outlet grille with a duct clips and extending the other end into the vent hole and seal space around the hole using a suitable sealant and cawling where neccessary fixing the air outlet grille on the outer wall.

**Note:** Since the length of each duct is 1.5m, make sure that from the centre of installation position there should be a distance within 1.5m to the outside vent.



## Step 3: Locating the heater

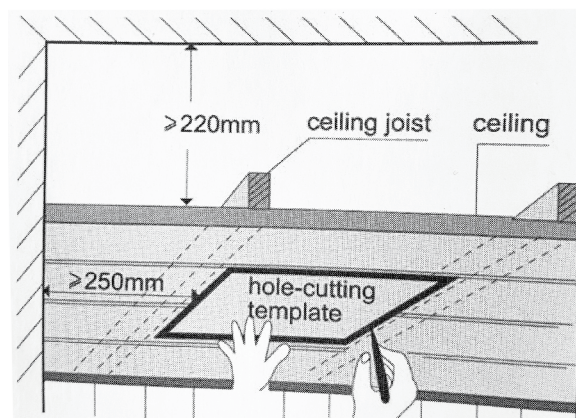
For the purpose of obtaining best heating effect, from the lamps there should be a distance of about a 2.3mtr overall height to ground.

## Step 4: Prepare the ceiling

Cut around the included hole-cutting template and use this template to mark the hole outline on the ceiling.

**Note the hole cut out size is 625mm x 330mm for this unit.**

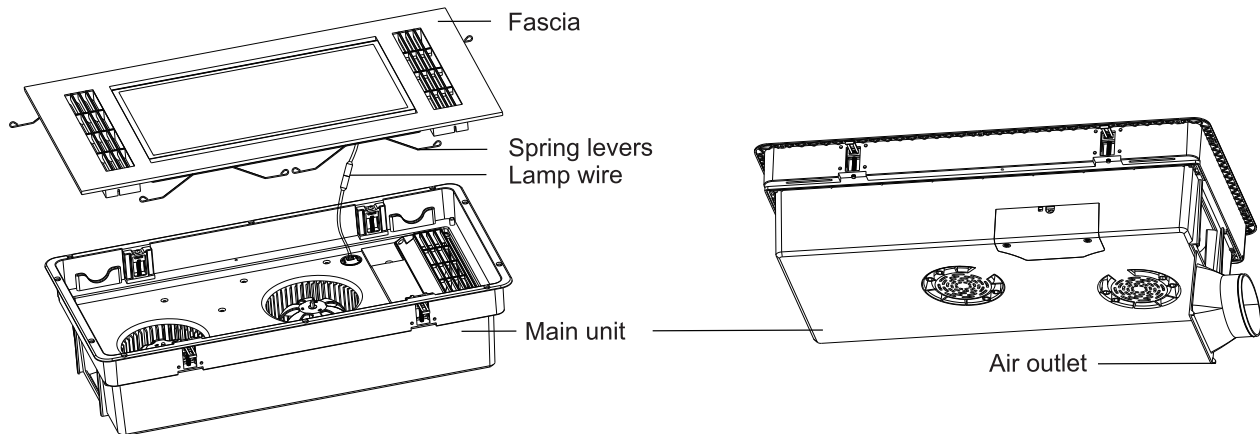
Make sure a distance between the edges and wall is no less than 250mm. Also from the rooftop should be a minimum 220mm height to the ceiling.



# INSTALLATION

## Step 5: Remove the fascia and fixed air outlet

Remove fascia from the main unit with care by pressing the four spring levers attached to rear of fascia and disconnect lamp wire. Take out the air outlet in the packaging box, and insert it into the fixing slot of the air outlet on the side of the main unit from the bottom up, and ensure that the air outlet is installed properly.



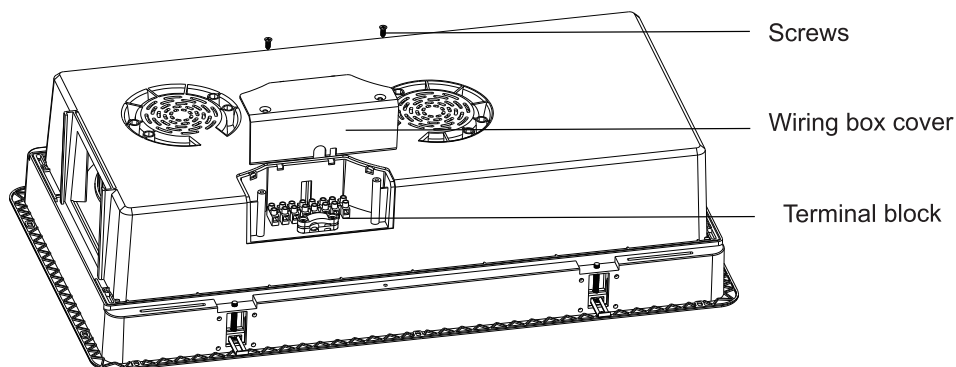
## Step 6: Electrical Wiring

Remove wiring box cover to access terminal block. The bathroom heater unit must be wired through either a plug and socket or an all-pole disconnecting switch (SW 1) in accordance with Australian wiring rules AS/NZS3000.

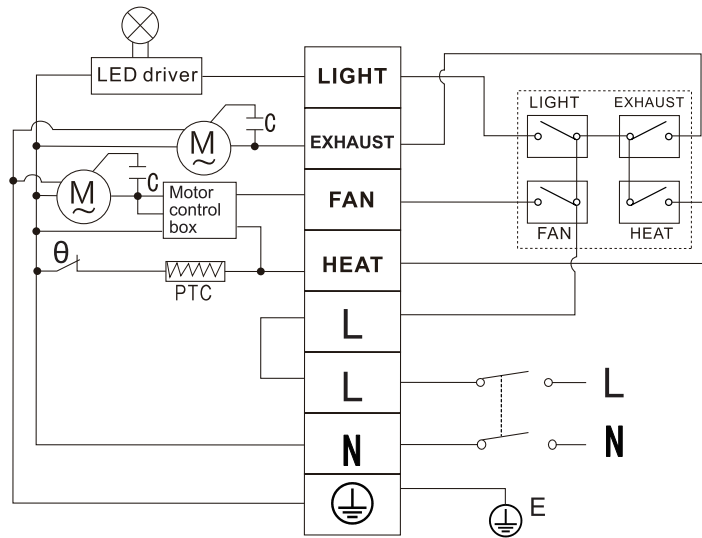
Note: This unit is protected from overheating. When power to heater is switched on and sensed temperature inside housing reaches 85°C, heating element stops running automatically. When temperature is lower than 65°C, heater will start running again.

### Note:

- Ensure that the power is turned off before carrying out any work on electrical installations.
- Remove the terminal cover on the heater unit and wire accordingly to the label adjacent to the terminal block. Make sure all cables are securely connected and refit the terminal cover.
- Clean the fascia and with a soft moist cloth. Turn on power and check the switch operation



# INSTALLATION



M:Motor C:Capacitor  
θ:Heat protector

Terminal block  
220-240V AC 50Hz

Light:18W LED  
Heater:PTC 2200W  
Fan:40W  
Exhaust :40W

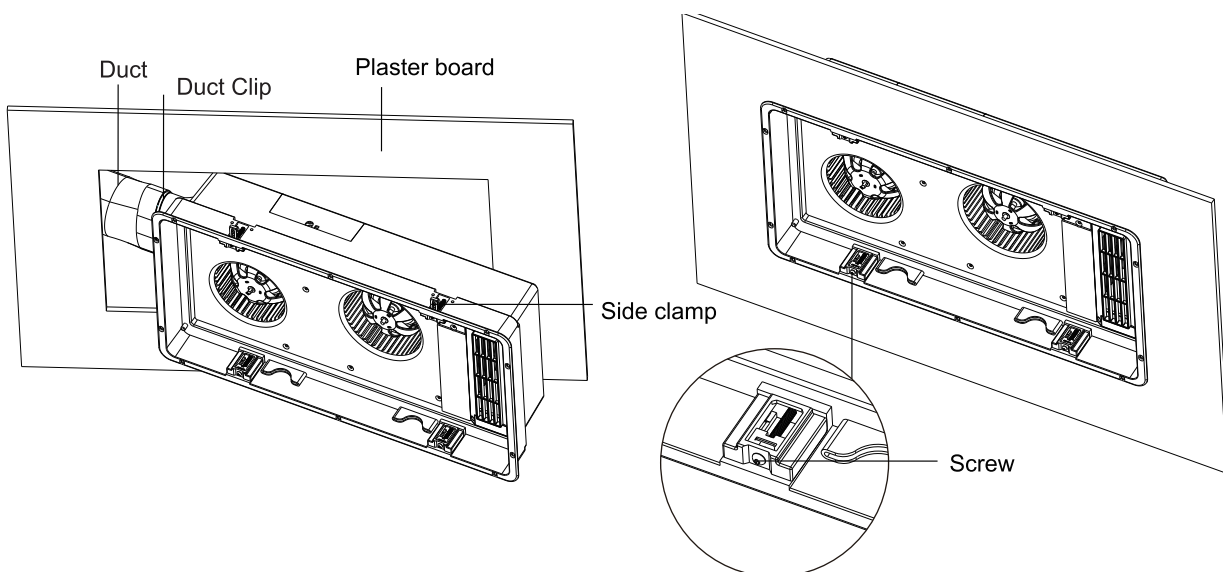
## Step 7: Connect the ducting

Locate and fit the duct to the ducting outlet, be sure to secure properly over the duct outlet. Use clamp supplied or zip tie to secure duct (tighten so that it will not come off during operation).

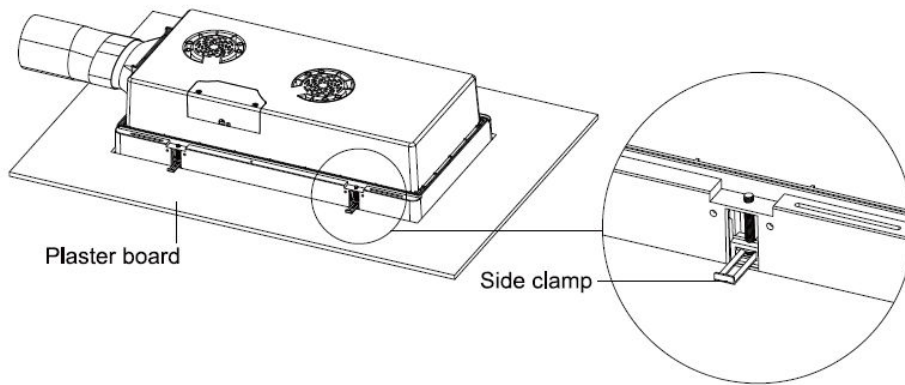
## Step 8: Position the housing into the hole

Based on the position of the fan outlet, select the optimal direction of the shell entry hole. Make sure to rotate the mounting bracket to be flush with the side wall of the main engine, enabling the body to pass through the hole without damaging the gypsum board. Use a screwdriver to rotate the screws of the mounting bracket to fix the mounting bracket to the gypsum board and tighten the screws to secure the mounting bracket in the appropriate position.

**Note:** Try to keep the redundant wire away from the housing.

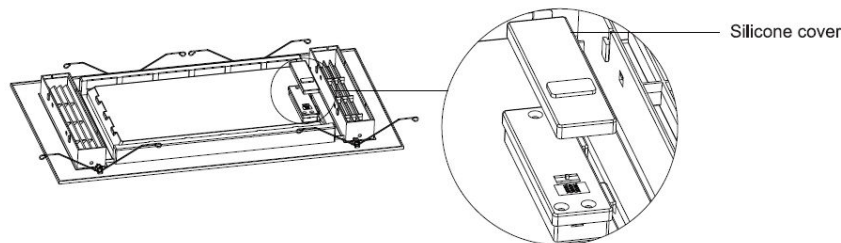


# INSTALLATION



## Step 9: Final Installation

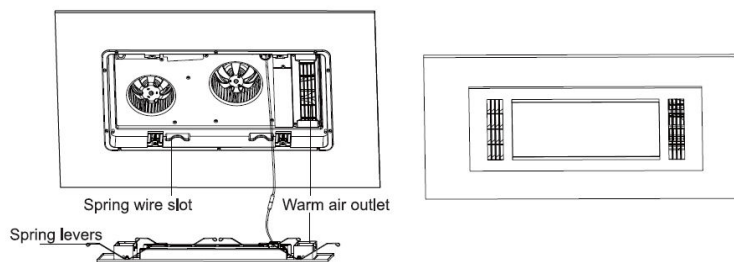
a. Remove the silicone cover on the switch, select a light colour (3000K/4000K/5000K) for LED panel by the sliding switch behind the panel, put the silicone cover back on the switch in same way.



## b. Replace the fascia

Connect LED light power connector with driver output connector. Re-install fascia to main unit by squeezing four safety spring levers together and slot them into the spring wire slot on main unit.

**WARNING:** Warm air outlet must align with the special grill with heat-resistant materials.



## c. Fix the switch panel to the wall

Note:

1. The switch wiring should be mounted inside the wall to give the switch an integrated built in appearance. If it is necessary to run the wiring on the outside of the wall, use a suitable conduit and fixings to properly located and hold the wiring used.
2. For the exhaust fan to work efficiently, replacement air of a volume equivalent to what is being extracted must be able to enter the room. In general this air would be drawn from under the door, or through a slightly opened window. If the room is air-tight, the fan will function poorly.
3. Align fascia with main unit before pushing it in. Make sure the LED panel connector and cable are not pressed by other components. Place whole fascia securely with main unit.
4. Before first use, turn on heater and fan for at least 5 minutes to eliminate any lingering odour.

# INSTALLATION

**Note:** Our bathroom heater uses the PTC as a source of heat. It also combines the functions of exhaust and light.

## 1. Heat

Turn on/off 'HEAT' button.

The heater blows warm air down by turning on the 'HEAT' button.

Do not touch the warm air outlet of the fascia with any part of your body when in use.

## 2. Fan

Turn on/off 'FAN' button.

The heater blows cool air down by turning on the 'FAN' button.

## 3. Exhaust

Turn on/off 'EXHAUST' button.

The heater can exhaust odour and steam in a quick and efficient way by turning on the 'Exhaust' button.

**Note:** No additional exhaust fan is necessary for the heater itself can exhaust all our and steam as needed.

## 4. Lighting

Turn on/off 'LIGHT' button.

**Note:** Do not turn on/off the buttons frequently when in use. Shut off power if in long vacancy.

# MAINTENANCE

## 1. Clean

- a. Shut off power before cleaning
- b. Wipe lamps and fascia with care using a soft cloth soaked with neutral detergent.
- c. Do not use alcohol cleaner, or thinner or liquid that is corrosive to plastic for cleaning.
- d. Motor and electrical connection parts should not be in contact with water.

**Note:** Ensure the fascia is cool to touch before handling.

## 2. Replacement fascia

- a. Check and connect lamp wire regularly
- b. Shut off power before replacement
- c. The integrated fascia assembly can not be replaced when operation lifetime of LED lamp is reached.

**Note:** It may affect operation (even cause danger) when lamps, other than the designated ones, are used.



# WARRANTY INFORMATION

## 2 Year In-Home Warranty

For further information please visit our website (link below) OR scan the QR code.  
<https://www.martec.com.au/warranty-statement>



For technical support, please contact Martec customer service hotline at **(02) 8778 7500**.

If you suspect any issues with the installation, please contact your installer to resolve the matter. In case you believe the issue is related to a manufacturing defect, you can file a warranty claim by visiting **<https://www.martec.com.au/warranty-claim-form>** or scan the below QR code.

**IMPORTANT NOTICE:** All claims for warranty must be accompanied with the following three documents:

1. Copy of the Installation Receipt OR Tax Invoice OR Certificate of Compliance for the installation of the Martec product from the installing electrician
2. Copy of the Purchase Receipt for the Martec product
3. Submit an online warranty claim form. Please ensure that the purchaser's full name and contact details are clearly stated, in addition to the full nature of the fault and the product code.

It is the responsibility of the purchaser to keep the documents required for a warranty application of the warranty period.

**Customer Service operates between 8AM to 4PM EST Monday to Friday.**

**Customer Service Number: (02) 8778 7500**

