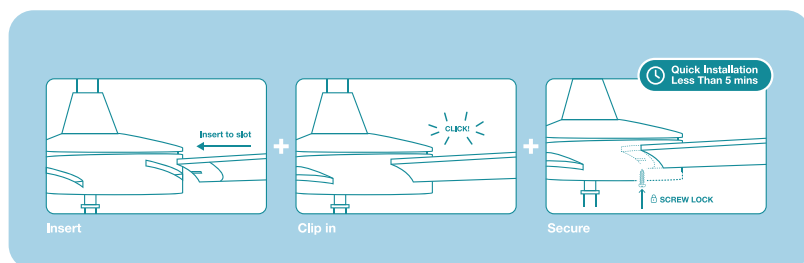


## 23W 1220MM (48") DC CEILING FAN 3 ABS BLADES



**WALL  
CONTROL  
INCLUDED**



2  
YEAR  
In-Home  
Warranty



Indoor &  
Covered Outdoor  
Use



Summer/  
Winter  
Reverse  
Function



Scan for  
product  
information

### Model Numbers

MLDC123W Matt White

### Features

- Brushless quiet and efficient 23W DC motor
- Fast fix blades for easy installation
- Slimline designed ideal for indoor and covered outdoor applications
- ABS blades and body with steel canopy
- Fully reversible for summer and winter from the knob on the wall control
- Supplied with wall control for ease to use

## 23W 1220MM (48") DC CEILING FAN 3 ABS BLADES

### SPECIFICATIONS

<b>Model Name</b>	Legend DC
<b>Model Numbers</b>	MLDC123W Matt White
<b>Power Wattage / Motor</b>	23W DC
<b>Voltage / Frequency</b>	220-240Va.c. 50-60Hz
<b>Air Movement (m³/hr)</b>	
Maximum RPM	Up to 195 RPM
Airflow Efficiency	Up to 400m³/hr per watt
Speed 3 (Highest)	9,000m³/hr
Speed 2	8,000m³/hr
Speed 1 (Lowest)	7,300m³/hr
<b>Materials / Blade</b>	ABS blade
<b>Number of Blades</b>	3
<b>Blade Pitch</b>	12°
<b>Hangsure Canopy</b>	10°
<b>Lighting Wattage / Type</b>	N/A
<b>Colour Temperature</b>	N/A
<b>Lumens Output</b>	N/A
<b>Rated Lifetime</b>	N/A

### SHIPPING

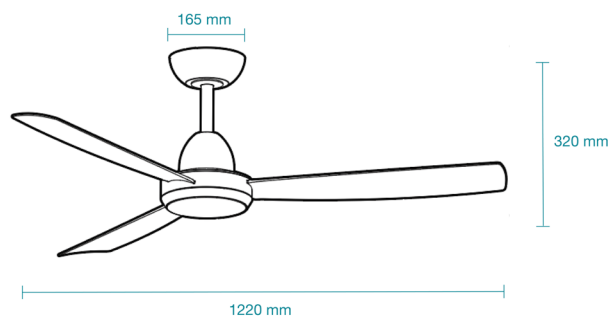
Model Numbers	Carton Size			Carton Quantity	Carton Gross Weight (Kg)
	H (mm)	W (mm)	L (mm)		
MLDC123W	265	290	600	1	5

### INSTALLATION

<b>Installation</b>	By licensed electrician only
<b>Warranty</b>	2 year In-Home warranty
For further information please visit our website OR scan the QR Code <a href="https://www.martecaustalia.com.au/warranty-statement/">https://www.martecaustalia.com.au/warranty-statement/</a>	



### DIMENSIONS



Aust/NZ Approval No.  
GMA